

1

#2 - PUSH

The navigation bar shows various transition icons: None, Morph, Fade, Push (highlighted with a red box), Wipe, Split, Reveal, Cut, Random Bars, Shape, and Uncover.

- Category:**
 - General purpose
- What It Does:**
 - The previous slide pushes the current slide into view
- Default Duration:**
 - 1.0 Seconds
- Four Effect Options:**
 - From Bottom, From Left, From Right, From Top
- Best Use:**
 - Great for everyday business presentations
 - Visible
 - Medium speed, will add a second for every slide
 - Visually says: "we are moving to the next slide"
 - I like the default FROM BOTTOM

POWERUP COMPUTER TRAINING

3

#1 - FADE

The navigation bar shows various transition icons: None, Morph, Fade (highlighted with a red box), Push, Wipe, Split, Reveal, Cut, Random Bars, Shape, and Uncover.

- Category:**
 - General purpose
- What It Does:**
 - The previous slide fades away, revealing the current slide
- Default Duration:**
 - 0.7 Seconds
- Two Effect Options:**
 - Smoothly
 - Through Black (CONSIDER!!)
- Best Use:**
 - Great for everyday business presentations
 - Is subtle
 - Audience won't notice or tire of this in long slide shows
 - Quick, does not add significant length to presentation
 - May be too fast for online presentations

POWERUP COMPUTER TRAINING

2

#3 - REVEAL

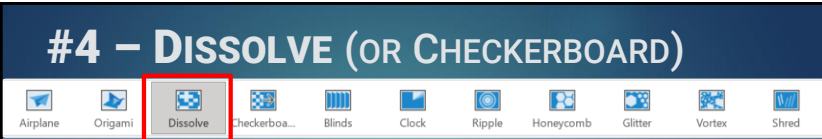
The navigation bar shows various transition icons: None, Morph, Fade, Push, Wipe, Split, Reveal (highlighted with a red box), Cut, Random Bars, Shape, and Uncover.

- Category:**
 - General purpose with DRAMA
- What It Does:**
 - The previous slide slowly moves forward and disappears and then the current slide slowly drops into view.
- Default Duration:**
 - 3.4 Seconds !!!
- Four Effect Options:**
 - Smoothly from RIGHT or LEFT
 - Through Black from RIGHT or LEFT
- Best Use:**
 - Classy look with motion, but keep for shorter number of slides
 - 20 Slides X 3.4 seconds = 1+ Minute!
 - Visible
 - Even online, especially if "through black"

POWERUP COMPUTER TRAINING

4

#4 – DISSOLVE (OR CHECKERBOARD)



- Category:**
 - More Pizzazz, just a touch with Dissolve
- What It Does:**
 - The previous slide dissolves into irregularly sized pieces that reassemble into the current slide
- Default Duration:**
 - 1.2 Seconds
 - Checkerboard: 2.5 Seconds
- No Extra Effect Options**
 - Checkerboard has two options
- Best Use:**
 - Says, "I'm Changing Slides"
 - Save for special "take notice" slides, but with a large changed background, such as a section and color change
 - Can still be considered "professional"
 - Not too fast or slow
 - 20 slides = about 22 seconds
 - Visible
 - Even online
 - NOTE: If the background is the "same" then dissolve does NOT do much, but CHECKERBOARD Will.

POWERUP COMPUTER TRAINING

5

#6 – GLITTER (OR VORTEX)

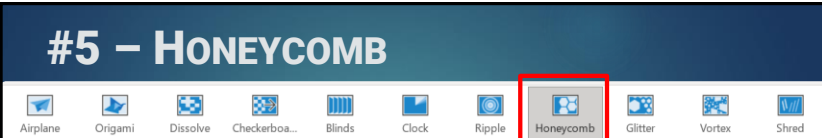


- Category:**
 - Extreme Pizzazz, "In Your Face"
- What It Does:**
 - The previous slide disappears under a rolling wave of small black and white shapes, revealing the current slide
- Default Duration:**
 - 3.9 Seconds (!!!!)
- Eight Extra Effect Options**
 - Diamonds & Hexagons from different directions
- Best Use:**
 - Says, "I'm Changing Slides" with an **EXCLAMATION MARK!**
 - Don't use for the whole presentation
 - Save for special "take notice" slides
 - Slow
 - 20 slides X 3.9 seconds = 1.2 minutes
 - Visible
 - Even online, but on slow connections, there may be TOO much happening

POWERUP COMPUTER TRAINING

7

#5 – HONEYCOMB



- Category:**
 - Extreme Pizzazz, "In Your Face"
- What It Does:**
 - The previous slide spins into the foreground as it becomes obscured by a pattern of black hexagonal cell shapes. Pieces of the current slide are glimpsed within the cells until the pattern disappears, revealing the whole slide
- Default Duration:**
 - 4.4 Seconds (!!!!)
- No Extra Effect Options**
- Best Use:**
 - Says, "I'm Changing Slides" with an **EXCLAMATION MARK!**
 - Don't use for the whole presentation
 - Save for special "take notice" slides
 - Slow
 - 20 slides X 4.4 seconds = 1.5 minutes
 - Visible
 - Even online, but on slow connections, there may be TOO much happening

POWERUP COMPUTER TRAINING

6

#7 – GALLERY



- Category:**
 - Specialty; great for photos
- What It Does:**
 - The previous slide pivots and disappears to the side while the current slide comes into view
- Default Duration:**
 - 1.6 Seconds
- Two Extra Effect Options**
 - Right or Left
- Best Use:**
 - Great for automated slide show of images
 - Visible
 - Even online

POWERUP COMPUTER TRAINING

8

#8 – SHRED

Airplane Origami Dissolve Checkerboa... Blinds Clock Ripple Honeycomb Glitter Vortex **Shred**

- ▶ **Category:**
 - ▶ One off MAKE A POINT
- ▶ **What It Does:**
 - ▶ The previous slide breaks into irregular pieces as if cut by a paper shredder and then the pieces reassemble as the current slide
- ▶ **Default Duration:**
 - ▶ 3 Seconds
- ▶ **Two Extra Effect Options**
 - ▶ Right or Left
- ▶ **Best Use:**
 - ▶ Get attention
 - ▶ But do NOT OVERUSE!!!
 - ▶ Visible
 - ▶ Even online
 - ▶ Speed . . . Won't matter if you use just once per slide deck

POWERUP
COMPUTER TRAINING

9

#10 – FERRIS WHEEL

Switch Flip Gallery Cube Doors Box Comb Zoom Random Pan **Ferris Wheel**

- ▶ **Category:**
 - ▶ Dynamic & Fancy
- ▶ **What It Does:**
 - ▶ The previous slide rotates to the foreground like a pod on a Ferris wheel and disappears, followed by the current slide which glides in to view
- ▶ **Default Duration:**
 - ▶ 2.0 Seconds
- ▶ **Two Extra Effect Options**
 - ▶ Right or Left
- ▶ **Best Use:**
 - ▶ ??
 - ▶ Is slick
 - ▶ But may make people "dizzy"
- ▶ **Speed**
 - ▶ 20 slides X 2 seconds = 40 seconds
- ▶ **Special Note**
 - ▶ This is best with a "solid" background.
 - ▶ Background does not move
 - ▶ Photo or Patterns kill the effect

POWERUP
COMPUTER TRAINING

11

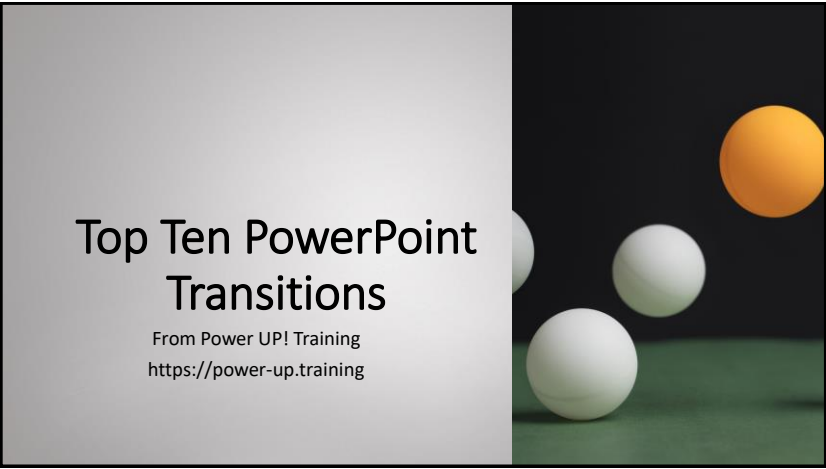
#9 – WINDOW

Conveyor Rotate **Window** Orbit Fly Through

- ▶ **Category:**
 - ▶ Dynamic & Fancy
- ▶ **What It Does:**
 - ▶ The previous slide opens from the center and each half disappears to the side as the current slide moves from the background to the foreground
- ▶ **Default Duration:**
 - ▶ 1.5 Seconds
- ▶ **Two Extra Effect Options**
 - ▶ Vertical or Horizontal
- ▶ **Best Use:**
 - ▶ Maybe with "Intro to New Topic"
- ▶ **Speed**
 - ▶ Use it just once and not an issue
- ▶ **Special Note**
 - ▶ This is best with a "solid" background.
 - ▶ Background does not move
 - ▶ Photo or Patterns kill the effect

POWERUP
COMPUTER TRAINING

10



1

#2 - PUSH

- **Category:**
 - General purpose
- **What It Does:**
 - The previous slide pushes the current slide into view
- **Default Duration:**
 - 1.0 Seconds
- **Four Effect Options:**
 - From Bottom, From Left, From Right, From Top

- **Best Use:**
 - Great for everyday business presentations
 - Visible
 - Medium speed, will add a second for every slide
 - Visually says: "we are moving to the next slide"
 - I like the default FROM BOTTOM

POWERUP
COMPUTER TRAINING

3

#1 - FADE

- **Category:**
 - General purpose
- **What It Does:**
 - The previous slide fades away, revealing the current slide
- **Default Duration:**
 - 0.7 Seconds
- **Two Effect Options:**
 - Smoothly
 - Through Black (CONSIDER!!)

- **Best Use:**
 - Great for everyday business presentations
 - Is subtle
 - Audience won't notice or tire of this in long slide shows
 - Quick, does not add significant length to presentation
 - May be too fast for online presentations

POWERUP
COMPUTER TRAINING

2

#3 - REVEAL


- **Category:**
 - General purpose with DRAMA
- **What It Does:**
 - The previous slide slowly moves forward and disappears and then the current slide slowly drops into view.
- **Default Duration:**
 - 3.4 Seconds !!!
- **Four Effect Options:**
 - Smoothly from RIGHT or LEFT
 - Through Black from RIGHT or LEFT

- **Best Use:**
 - Classy look with motion, but keep for shorter number of slides
 - 20 Slides X 3.4 seconds = 1+ Minute!
 - Visible
 - Even online, especially if "through black"

POWERUP
COMPUTER TRAINING

4

#4 – DISSOLVE (OR CHECKERBOARD)




- Category:**
 - More Pizzazz, just a touch with Dissolve
- What It Does:**
 - The previous slide dissolves into irregularly sized pieces that reassemble into the current slide
- Default Duration:**
 - 1.2 Seconds
 - Checkerboard: 2.5 Seconds
- No Extra Effect Options**
 - Checkerboard has two options

- Best Use:**
 - Says, "I'm Changing Slides"
 - Save for special "take notice" slides, but with a large changed background, such as a section and color change
 - Can still be considered "professional"
 - Not too fast or slow
 - 20 slides = about 22 seconds
 - Visible
 - Even online
 - NOTE: If the background is the "same" then dissolve does NOT do much, but CHECKERBOARD Will.**

POWERUP
COMPUTER TRAINING

5

#6 – GLITTER (OR VORTEX)




- Category:**
 - Extreme Pizzazz, "In Your Face"
- What It Does:**
 - The previous slide disappears under a rolling wave of small black and white shapes, revealing the current slide
- Default Duration:**
 - 3.9 Seconds (!!!)
- Eight Extra Effect Options**
 - Diamonds & Hexagons from different directions

- Best Use:**
 - Says, "I'm Changing Slides" with an **EXCLAMATION MARK!**
 - Don't use for the whole presentation
 - Save for special "take notice" slides
 - Slow
 - 20 slides X 3.9 seconds = 1.2 minutes
 - Visible
 - Even online, but on slow connections, there may be TOO much happening

POWERUP
COMPUTER TRAINING

7

#5 – HONEYCOMB




- Category:**
 - Extreme Pizzazz, "In Your Face"
- What It Does:**
 - The previous slide spins into the foreground as it becomes obscured by a pattern of black hexagonal cell shapes. Pieces of the current slide are glimpsed within the cells until the pattern disappears, revealing the whole slide
- Default Duration:**
 - 4.4 Seconds (!!!!)
- No Extra Effect Options**

- Best Use:**
 - Says, "I'm Changing Slides" with an **EXCLAMATION MARK!**
 - Don't use for the whole presentation
 - Save for special "take notice" slides
 - Slow
 - 20 slides X 4.4 seconds = 1.5 minutes
 - Visible
 - Even online, but on slow connections, there may be TOO much happening

POWERUP
COMPUTER TRAINING

6

#7 – GALLERY




- Category:**
 - Specialty: great for photos
- What It Does:**
 - The previous slide pivots and disappears to the slide while the current slide comes into view
- Default Duration:**
 - 1.6 Seconds
- Two Extra Effect Options**
 - Right or Left

- Best Use:**
 - Great for automated slide show of images
 - Visible
 - Even online

POWERUP
COMPUTER TRAINING

8

#8 – SHRED




- **Category:**
 - One off MAKE A POINT
- **What It Does:**
 - The previous slide breaks into irregular pieces as if cut by a paper shredder and then the pieces reassemble as the current slide
- **Default Duration:**
 - 3 Seconds
- **Two Extra Effect Options**
 - Right or Left
- **Best Use:**
 - Get attention
 - But do NOT OVERUSE!!!
 - Visible
 - Even online
- **Speed . . . Won't matter if you use just once per slide deck**

POWERUP
COMPUTER TRAINING

9

#10 – FERRIS WHEEL

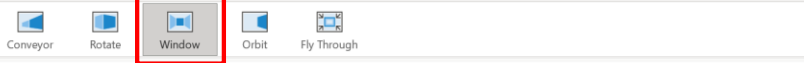


- **Category:**
 - Dynamic & Fancy
- **What It Does:**
 - The previous slide rotates to the foreground like a pod on a Ferris wheel and disappears, followed by the current slide which glides in to view
- **Default Duration:**
 - 2.0 Seconds
- **Two Extra Effect Options**
 - Right or Left
- **Best Use:**
 - ??
 - Is slick
 - But may make people "dizzy"
- **Speed**
 - 20 slides X 2 seconds = 40 seconds
- **Special Note**
 - This is best with a "solid" background.
 - Background does not move
 - Photo or Patterns kill the effect

POWERUP
COMPUTER TRAINING

11

#9 – WINDOW



- **Category:**
 - Dynamic & Fancy
- **What It Does:**
 - The previous slide opens from the center and each half disappears to the side as the current slide moves from the background to the foreground
- **Default Duration:**
 - 1.5 Seconds
- **Two Extra Effect Options**
 - Vertical or Horizontal
- **Best Use:**
 - Maybe with "Intro to New Topic"
- **Speed**
 - Use it just once and not an issue
- **Special Note**
 - This is best with a "solid" background.
 - Background does not move
 - Photo or Patterns kill the effect

POWERUP
COMPUTER TRAINING

10